

# Lights

Made of Porcelain, Bakelite®,  
Metal and Glass

Catalogue 2022/23



## Our lights. In a different class, inside and out.



In manufacturing and purchasing the components for our lights, we follow the same guiding principles that also apply to our light switches. We focus on a materiality that simultaneously ensures durability, functional reliability and visual appeal – in this case, of our lights. This is true not only for the visible parts, but for the technical inner workings: sockets made of porcelain, Bakelite® or steatite (rarely of brass-plated steel), the best fabric cables available (from the Vogtland region) and solid, reliable switching mechanisms. We manufacture many of the parts on our own tools. Should there be a need for repair or spare parts despite the longevity of our products, again our principle “Things made to last” holds: We repair and keep spare parts in stock for the future.



## Overview of our lights.



**LISILUX lights  
by Lindner**  
Page 3–4



**THPG MINIMAL  
lights**  
Page 5–6



**THPG wall-mounted  
floodlights**  
Page 7



**Basement and  
outdoor lights**  
Page 8–9



**RIMSA  
work lights**  
Page 10–11

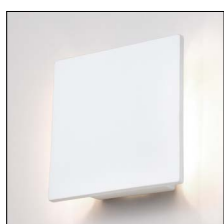


**Bone china  
porcelain lights**  
Page 12



**Triplex  
opal glass lamps**

Page 13



**Alabaster lights  
from Veneto**

Page 14



**Porcelain lights  
from Veneto**

Page 15



**MEDIUM  
light kit**

Page 17–18



**MINIMAL  
light kit**

Page 18–19



**Components and  
accessories from  
our workshop**

Page 20–23

## LISILUX lights from Lindner: Porcelain, glass and pristine light.



In 2011, we bought this famous series of lights, along with the tools, original moulds and trademark rights, from a French corporation where it had recently had a somewhat forlorn existence. Since then, we have had these classic purpose-built lights, which have been in production since the 1940s, manufactured by a German manufacturer of technical porcelain in Poland on the original tools. For decades, the designs have been recognized as prime examples of the creative confidence of German industrial design in the first half of the 20th century. The brand name "Lisilux", introduced by Lindner during the late 1960s for the series, which was only ever modified slightly, derives from the German for "Lindner safety light". It refers to the particular material strength of the porcelain bases and the stable glass domes that reliably protect the light bulbs from environmental conditions. Porcelain and glass have proven to be reliable not only in humid environments (sauna lights), but as ideal protection against aggressive, sometimes corrosive air pollutants. They tend not to corrode, and the smooth, hard surfaces are always easy to clean, even after many years of use. LISILUX is a functional light in the best sense of the word.

**LISILUX-Leuchten**

**die idealen Feuchtraumleuchten**

**VORTEILE**  
die der Fachmann zu schätzen weiß:

- wärmesicher**
- schutzisoliert**
- flache Form**
- optimales Licht**
- Würgenippel**
- Ringfederkontakt**
- einfache Montage**
- kartonverpackt**
- preiswert**

	Watt	Fassungs- gewinde	Höhe bzw. Ausladg. mm	Ein- führung	Stück kg	mit Schutzglas, Nbr Nummer	mit LINDNER-Glas DM Nummer
<b>LISILUX-Deckenleuchten</b>							
	40/60	E 27	130	eine	0,44	400.6	400.7
	40/60	E 27	130	zwei	0,45	400.62	400.72
	60/75	E 27	130	eine	0,53	407.6	407.7
	60/75	E 27	130	zwei	0,54	407.62	407.72
	100	E 27	174	eine	1,00	308.6	308.1
	100	E 27	174	zwei	1,03	308.62	308.12
<b>LISILUX-Wandleuchten</b>							
	40/60	E 27	135	eine	0,52	401.6	401.7
	60/75	E 27	135	eine	0,55	408.6	408.7
<b>Ersatzgläser</b>							
	40/60				0,15	11	11.7
	60/75				0,16	12	12.7
	100				0,35	13	18

Die aufgeführten Preise enthalten nicht die Mehrwertsteuer!

**LINDNER · GMBH · BAMBERG**

**Alle Elektrizitätswerke  
fordern  
eine gewissenhafte Montage  
mit VDE-Material!**

**Deshalb: LISILUX**



## LISILUX: An overview.

The LISILUX ceiling mounts are available in four sizes: S (Ø 83 mm), M (Ø 95 mm), L (Ø 112 mm) and XL (Ø 139 mm). The LISILUX wall mounts are available in two sizes: S (Ø 83 mm) and M (Ø 95 mm). By combining them with the clear or frosted LISILUX screw-in glasses or spherical glasses, you will get the lights shown below.

For use in high-temperature saunas, we offer appropriately designed LISILUX ceiling and wall mounts in size S and a stand-alone wall mount in size M. The sauna lamps feature a special seal and have been specifically tested by the VDE Testing and Certification Institute. The sauna versions should be combined only with the original LISILUX glasses.



### Ceiling light LISILUX S

Ø 83 mm, height 140 mm. Weight 600 g. E27, max. 60 W. IP54. VDE-certified.

**Clear** Product code **139629**  
**Frosted** Product code **177050**

### Sauna ceiling light S

**Clear** Product code **100768**  
**Frosted** Product code **100769**

### Ceiling light LISILUX M

Ø 95 mm, height 130 mm. Weight 730 g. E27, max. 75 W. IP54. VDE-certified.

**Clear** Product code **100752**  
**Frosted** Product code **100753**

### Ceiling light LISILUX L

Ø 112 mm, height 174 mm. Weight 1.2 kg. E27, max. 100 W. IP54. VDE-certified.

**Clear** Product code **139631**  
**Frosted** Product code **177048**

### Wall-mounted fitting sauna LISILUX M

Ø 95 mm, height 174 mm. Base: Width 98 mm, height 76 mm, depth 130 mm. Weight 1.1 kg. E27, max. 75 W. IP54. VDE-certified.

**Clear** Product code **100783**  
**Frosted** Product code **139634**



### Wall light LISILUX S

Ø 83 mm, Projection 136 mm. Weight 630 g. E27, max. 60 W. IP54. VDE-certified.

**Clear** Product code **100756**  
**Frosted** Product code **100757**

### Sauna wall light S

**Clear** Product code **100785**  
**Frosted** Product code **100767**

### Wall light LISILUX M

Ø 95 mm, projection 133 mm. Weight 730 g. E27, max. 75 W. IP54. VDE-certified.

**Clear** Product code **139630**  
**Frosted** Product code **177049**

### Wall light S opal glass

Ø 125 mm, projection 155 mm. Weight 710 g. E27, max. 60 W. IP54. VDE-certified. Product code **100797**

### Wall light M opal glass

Ø 150 mm, projection 170 mm. Weight 890 g. E27, max. 75 W. IP54. VDE-certified. Product code **100798**



### Ceiling light S opal glass

Ø 125 mm, height 155 mm. Weight 710 g. E27, max. 60 W. IP54. VDE-certified. Product code **100794**

### Ceiling light M opal glass

Ø 150 mm, height 185 mm. Weight 870 g. E27, max. 75 W. IP54. VDE-certified. Product code **100795**

### Ceiling light L opal glass

Ø 180 mm, height 230 mm. Weight 1.3 kg. E27, max. 100 W. IP54. VDE-certified. Product code **100796**

### Ceiling light XL opal glass

Ø 215 mm, height 270 mm. Weight 2 kg. E27, max. 200 W. IP54. VDE-certified. Product code **100781**



## THPG MINIMAL lights: Plain fixtures for ceilings and walls.



For our MINIMAL light series, which we have manufactured on our own tools, we rely on our tried and tested light construction material porcelain because of its insulating properties, resistance and visual appeal. The straight ceiling lamp holders and angled wall lamp holders are available in black and white. The brackets and screw rings can also be combined to create black and white lights, which ensures a high degree of aesthetic and functional variability, especially when shades are used (see pp. 18/19). The Bakelite® wall and ceiling mounts also presented here are made by a partner of ours in Switzerland and are exclusively distributed by us in Germany. – Our MINIMAL lights: the minimum in components, the maximum in quality.



### MINIMAL ceiling lamp holder porcelain white

Straight three-part porcelain lamp holder. Ø max. 75 mm, height 60 mm. E27, max. 75 W. IP20. VDE-certified. Product code **152643**



### MINIMAL ceiling lamp holder porcelain black

Straight three-part porcelain lamp holder. Ø max. 75 mm, height 60 mm. E27, max. 75 W. IP20. VDE-certified. Product code **152649**



### MINIMAL wall lamp holder porcelain white

Angled three-part porcelain lamp holder. Ø max. 75 mm, projection 85 mm. E27, max. 75 W. IP20. VDE-certified. Product code **152647**



### MINIMAL wall lamp holder porcelain black

Angled three-part porcelain lamp holder. Ø max. 75 mm, projection 85 mm. E27, max. 75 W. IP20. VDE-certified. Product code **152651**



### MIMIMAL angled lamp holder porcelain white

Angled three-part porcelain lamp holder. Ø 65 mm, height 80 mm, projection 75 mm. E27, max. 75 W. IP20. VDE-certified. Product code **152645**



### MIMIMAL angled lamp holder porcelain black

Angled three-part porcelain lamp holder. Ø 65 mm, height 80 mm, projection 75 mm. E27, max. 75 W. IP20. VDE-certified. Product code **152650**



### MIMIMAL ceiling lamp holder Bakelite®

Straight three-part Bakelite® lamp holder. Ø max. 73 mm, height 60 mm. E27, max. 75 W. IP20. VDE-certified. Product code **153109**



### MIMIMAL wall lamp holder Bakelite®

Angled three-part Bakelite® lamp holder. Ø max. 75 mm, projection 85 mm. E27, max. 75 W. IP20. VDE-certified. Product code **153108**

## ELDECO.

The slightly conical ELDECO porcelain lamp holder, which tapers towards the bulb, is another proprietary design from the Lindner series – a classic from the 1950s. Unfortunately, the bulb that had been specifically designed for this light is no longer produced. But the lamp holder itself is, and it serves as an attractive support for other E27 light bulbs.

### ELDECO lamp holder porcelain

Porcelain lamp holder for walls or ceilings. Ø max. 70 mm, height 60 mm. E27, max. 40 W. IP20. VDE-certified. Product code **100780**



All of the MINIMAL wall and ceiling lamp holders shown here can be combined with shades from our light kit on page 18.



## Also for hanging: The THPG MINIMAL lights.

Simple pendant lights assembled from high-quality components in our light workshop, which bring the light bulb – ideally an incandescent bulb – together with our customisable light cables to the height required in each case. Plastic sockets and PVC cables have reduced these lights to temporary use on construction sites, where they can be removed as quickly as possible when no longer needed. Of course, the THPG pendant lights can also be used in construction and renovation, but they do not have to go when the work is done. Instead, they can be modified in many ways by adding one of our porcelain canopies (with or without a cable outlet), by combining them with differently coloured cables, and by adjusting the length of the cable. The clamping ring makes it possible to combine the pendant lamp holders shown here with the shades from our MINIMAL light kit (see p. 18) and thus modify them for a wide variety of lighting purposes.

### MINIMAL pendant light Bakelite®

Black Bakelite® socket with black 1.5 m fabric cable. E27, max. 60 W. Weight 200 g. With cord grip.

Product code **100636**

**With black porcelain canopy**  
Product code **101091**



### MINIMAL pendant light porcelain white

White porcelain socket with white 1.5 m fabric cable. E27, max. 60 W. Weight 200 g. With cord grip.

Product code **101178**

### MINIMAL pendant light Bakelite® with pull switch

Black Bakelite® socket with black 1.5 m fabric cable. E27, max. 60 W. With cord grip and pull cord.

Product code **101180**

### MINIMAL pendant light Bakelite® with shade ring

Black Bakelite® socket with shade ring and black 1.5 m fabric cable. E27, max. 60 W. With integrated cord grip.

Product code **101191**

## Other options:



### White porcelain canopy

White glazed porcelain hemisphere. Ø 95 mm, height 55 mm.

**Porcelain white**

Product code **101090**

**Porcelain white with side cable entry**  
Product code **101194**



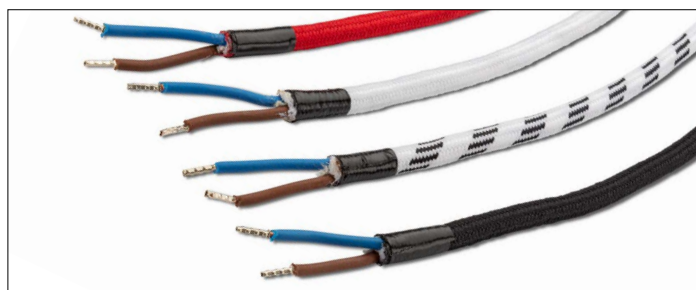
### Black porcelain canopy

Black glazed porcelain hemisphere. Ø 95 mm, height 55 mm.

**Porcelain black**

Product code **101091**

**Porcelain black with side cable entry**  
Product code **101193**



### Customisable fabric cables

The pendant lamps can be fitted with a differently coloured fabric cable for an additional charge.

**Red**

Product code **900534.2**

**White**

Product code **900534.7**

**White/black**

Product code **900534.4**

**Black**

Product code **900534.1**

### Longer cables

Cable lengths are customisable. The 1.5 m standard cable can be extended in 10 cm steps. Enter 1 = 10 cm or a higher number for the additional length in the shopping cart.

Product code **900535**

The three pendant lights shown on the right above can be combined with the shades from our light kit on page 18.

## THPG pendant lamps made of Bakelite® and glass.

Our large Bakelite® lamp with porcelain socket (E27, 60 W) was designed more than fifty years ago for factory floors and construction sites. Its visually pleasing and confidence-inspiring shade holder weighs only 150 grams. We ship this lamp, which can also be used in kitchens, living rooms, workshops and basements, with a 1.50 meter fabric cable. Screw and cord grip are fitted with a rubber seal. Depending on your requirements, the lamp also includes a structured

cylindrical pressed-glass or hand-blown lamp shade made of opal glass, which we offer in four different shapes. In addition, the light can be combined with any of the porcelain canopies from page 6 and any of our various fabric cables. This lamp holder can be combined with any of the size M glasses from page 4 and with any of the glasses shown on page 17 (= MEDIUM light kit).



### Living room lights

The basic form of the Bakelite® pendant light consists of a pendant shade holder and a glass shade. In combination with the canopies and cable options shown on page 6, it can be customized to your requirements. For bulbs see page 21.

#### THPG clear pressed glass pendant light

Bakelite® body, structured pressed glass shade: Ø 100 mm. Height 270 mm. Weight 1 kg. Porcelain socket E27, max. 60 W. IP20. Product code **100848**

#### With black porcelain canopy

Product code **101091**

#### THPG opal glass sphere pendant light

Bakelite® body, hand-blown opal glass shade: Ø 145 mm. Height 235 mm. Weight 820 g. Porcelain socket E27, max. 60 W. IP20.

Product code **100849**

#### THPG opal glass cone pendant light

Bakelite® body, hand-blown opal glass shade: Ø 145 mm. Height 230 mm. Weight 1 kg. Porcelain socket E27, max. 60 W. IP20. Product code **100850**

#### THPG opal glass droplet pendant light

Bakelite® body, hand-blown opal glass shade: Ø 115 mm. Height 230 mm. Weight 970 g. Porcelain socket E27, max. 60 W. IP20.

Product code **100851**

#### THPG opal glass curved cone pendant light

Bakelite® body, hand-blown opal glass shade: Ø 160 mm. Height 240 mm. Weight 1.1 kg. Porcelain socket E27, max. 60 W. IP20.

Product code **100852**



## THPG wall-mounted floodlights.

Usually, this type of light is used for workplaces at machines or in workshops, which explains their particularly robust design. We manufacture these wall-mounted floodlights in pigeon blue, black or white in our own workshop, with the black and white versions also available in a smaller size. All models are made of strong, painted steel and fitted with swiveling reflectors.



### Steel wall lamp large

Porcelain socket. Painted steel housing and reflector. Reflector: Ø 155 mm, length 195 mm, projection 285 mm, weight 470 g. E27, max. 60 W. Screws for wall mounting are supplied, dowels are not.

#### White

Product code **182550**

#### Black

Product code **182551**

#### Pigeon blue

Product code **182552**

### Steel wall lamp small

Porcelain socket. Painted steel housing and reflector. Reflector: Ø 100 mm, length 115 mm, projection 190 mm, weight 470 g. E27, max. 60 W. Screws for wall mounting are supplied, dowels are not.

#### White

Product code **182553**

#### Black

Product code **182554**



## Basement and outdoor lamps.

We offer the three models of these solid basement and outdoor lamps in two versions – made of grey painted cast iron and of the lighter Bakelite®. These lamps are made in Poland, feature pressed-glass shades and sturdy wire guards, and are used by Deutsche Post, Deutsche Bahn and industrial companies in surroundings where heavy mechanical stresses

are likely to occur. In terms of resistance to dust and moisture, the Bakelite® version is on a par with the cast iron lamps, which weigh almost four times as much. You can see and feel that functional safety and durability were the top priorities in the development of these lamps.



**Oval cast iron basement lamp small**  
Length 170 mm, width 125 mm, height 115 mm.  
Weight 1.3 kg. Porcelain socket E27, max. 60 W.  
IP54. Product code **100503**



**Oval cast iron basement lamp large**  
Length 195 mm, width 135 mm, height 115 mm.  
Weight 1.7 kg. Porcelain socket E27, max. 100 W.  
IP54. Product code **100506**



**Round cast iron basement lamp**  
Ø 200 mm, height 100 mm. Weight 2.3 kg.  
Porcelain socket E27, max. 100 W. IP54.  
Product code **100502**



**Oval Bakelite® basement lamp small**  
Length 170 mm, width 125 mm, height 115 mm.  
Weight 550 g. Porcelain socket E27, max. 60 W.  
IP54. Product code **100500**



**Oval Bakelite® basement lamp large**  
Length 195 mm, width 135 mm, height 115 mm.  
Weight 700 g. Porcelain socket E27, max. 100 W.  
IP54. Product code **100501**



**Round Bakelite® basement lamp round**  
Ø 200 mm, height 115 mm. Weight 700 g. Porcelain  
socket E27, max. 100 W. IP54. Product code **100499**

## Cast iron or aluminium: Outdoor lamps from Sweden.



**Angular cast iron:** This Swedish outdoor lamp dates back to the 1920s. As with the original, the cast iron components, such as the wall cover, bracket and lamp head, are soldered together and triple dip painted in matte black. A version for corner mounting is also available.



**Black cast iron wall lamp**  
Total height 270 mm, projection 350 mm, Ø glass globe 180 mm, height wall-mounting panel 105 mm, width 75 mm. Weight 2.3 kg. Porcelain socket E27, max. 60 W. IP44. Product code **104101**

**Black cast iron wall lamp for corner mounting**  
Total height 270 mm, projection 370 mm, Ø glass globe 180 mm, height wall-mounting panel 105 mm. Weight 2.5 kg. Porcelain socket E27, max. 60 W. IP44. Product code **104201**



**Sleek cast aluminium:** This outdoor lamp is Swedish as well and dates back to the 1940s. The lamp arm is 27 cm long and is made of one piece of cast iron. The internal thread in the lamp head fits any of the seven screw-in glasses we offer. The light arm is powder-coated in black or grey and is available with a 90-degree angle or with a slightly ascending 80-degree angle, measured above the light towards the wall. Both models are also available for corner mounting. A total of 56 possible combinations; IP44 when fitted.

**Wall bracket  
90 degrees**

Projection 290 mm.  
Weight 800 g. E27,  
max. 60 W.

**Grey**  
Product code **191101**

**Black**  
Product code **191102**



**Wall bracket  
90 degrees for  
corner mounting**

Projection 290 mm.  
Weight 800 g. E27,  
max. 60 W.

**Grey**  
Product code **191103**

**Black**  
Product code **191104**



**Wall bracket  
80 degrees**

Projection 270 mm.  
Weight 700 g. E27,  
max. 60 W.

**Grey**  
Product code **191105**

**Black**  
Product code **191106**



**Wall bracket  
90 degrees for  
corner mounting**

Projection 270 mm.  
Weight 700 g. E27,  
max. 60 W.

**Grey**  
Product code **191107**

**Black**  
Product code **191108**



**Configuration example:**  
Wall bracket 90 Grad black  
Product code **191102**  
Cylinder glass clear  
Product code **191109**

**Cylindrical glass  
clear**

Total length 185 mm,  
max. width 105 mm.  
Weight 400 g.

Product code **191109**



**Cylindrical glass  
opal glass**

Total length 185 mm,  
max. width 105 mm.  
Weight 400 g.

Product code **191110**



**Cylindrical glass  
matte**

Total length 185 mm,  
max. width 105 mm.  
Weight 400 g.

Product code **191111**



**Spherical glass opal  
glass 150 mm**

Total length 160 mm,  
Ø 150 mm. Weight  
400 g.

Product code **191112**



**Configuration example:**  
Wandarm 80 Grad black  
Product code **191106**  
Cylinder glass matt  
Product code **191111**

**Conical glass clear**

Total length 150 mm,  
max. width 160 mm.  
Weight 560 g.

Product code **191113**



**Conical glass opal  
glass**

Total length 150 mm,  
max. width 160 mm.  
Weight 560 g.

Product code **191114**



**Glass droplet opal  
glass**

Total length 160 mm,  
Ø 150 mm. Weight  
400 g.

Product code **191115**



## Outdoor lights for indoors: Bamag U7 – the Berlin gas lantern.



They used to be a distinctive feature of Berlin's cityscape, and it always was an event when these lanterns – some of which were installed in four rows along streets in Charlottenburg and Zehlendorf – flared up at dusk. Berlin's gas lanterns, of which no fewer than 22,000 were in use at one point, have been removed over the past decade despite protests and replaced by much colder electric lanterns. The most famous among the old lanterns, the Bamag U7 top-mounted light that has been in use since 1951, can now be given a refuge in your home. It will repay you not only with its pleasant visual appearance, but with an additional light that comes from the top opening of the shade, which was originally intended only for heat dissipation.

**Bamag U7**

Aluminium sheet (Al99.5).  
Lamp head: Ø 420 mm, height 360 mm.  
Canopy: Ø 76 mm, height 76 mm,  
cable length 2 m. Weight 1.78 kg, E27.

**With black cable** Product code **107401**

**With red cable** Product code **107402**

**With black and white cable** Product code **107403**



## RIMSA: The best value for the price.



The basic type of this balanced-arm lamp from the early 20th century was originally intended as a long-reach, steerable and precisely adjustable workplace lamp. The towering design, with its specifically designated joints and heavy top, poses some considerable technical challenges: neatly working joints that reliably maintain a chosen position, allow corrections to be made and balance the effects of gravity for long periods of time by means of springs that do not fatigue or wear out. Since the 1980s, caricatures of such a workstation light have been pushed into the market at rock-bottom prices. There have been more recent attempts to salvage the by now completely botched design, but some of them have been extremely expensive. We offer the Italian original, which is still produced today by RIMSA, an Italian manufacturer that builds for us "new originals" of its balanced-arm lamps from 1946 and 1964. The lamp head can be swiveled generously thanks to a patented steel articulated socket at the upper end of the arm, which has been in production since 1946. The light cone can be easily and continuously fixed at almost any angle to illuminate the desired location with centimeter precision. Please order the lamp in the colour of your choice, along with a suitable mount.



*RIMSA Model 10 grey  
Product code 191211  
Table base grey  
Product code 191223*

### RIMSA Model 10

Model 10 has been in production almost unchanged since 1964. The only change that has been made is that the original one-piece aluminium light head has been replaced by a two-component version with a reflector made of pressed sheet steel and glass fiber-reinforced nylon. With table base, wall mount, clamp base or screw-on base plate. In black, white or grey.

Light arm length 1.08 m. Projection max. 1.2 m. Lamp head Ø 186 mm. Weight 1.65 kg. Porcelain socket E27, max. 60 W.

<b>Black</b>	Product code <b>191212</b>
<b>Grey</b>	Product code <b>191211</b>
<b>White</b>	Product code <b>191213</b>



*RIMSA Model 80 black rubberized  
Product code 191202  
Table base black rubberized  
Product code 191210*

### RIMSA Model 80

A fresh interpretation of the Model 10 on the occasion of RIMSA's 80th anniversary with more generous illumination thanks to a larger reflector diameter. With clamp base, wall mount, screwable base plate or enlarged table base. Available in grey hammer finish or black rubberized.

Light arm length 1.08 m. Projection max. 1.2 m. Lamp head: Ø 200 mm. Weight 1.5 kg. Porcelain socket E27, max. 60 W.

<b>Black rubberized</b>	Product code <b>191202</b>
<b>Grey hammer finish</b>	Product code <b>191201</b>



#### RIMSA table base

Weight (with cast iron core) 1.04 kg.

**Black (M10)** Product code **191224**

**Grey (M10)** Product code **191223**

**White (M10)** Product code **191225**

**Black rubberized (M80)** Product code **191210**

**Grey hammer finish (M80)** Product code **191209**



#### RIMSA clamp base

**Black (M10)** Product code **191215**

**Grey (M10)** Product code **191214**

**White (M10)** Product code **191216**

**Black rubberized (M80)** Product code **191204**

**Grey hammer finish (M80)** Product code **191203**



#### RIMSA table mounting base

**Black (M10)** Product code **191221**

**Grey (M10)** Product code **191220**

**White (M10)** Product code **191222**

**Black rubberized (M80)** Product code **191208**

**Grey hammer finish (M80)** Product code **191207**



#### RIMSA wall mount

**Black (M10)** Product code **191218**

**Grey (M10)** Product code **191217**

**White (M10)** Product code **191219**

**Black rubberized (M80)** Product code **191206**

**Grey hammer finish (M80)** Product code **191205**

#### Adapter for Mec 103

Product code **191227**



#### RIMSA Model Mec 103

Originally developed as a work lamp for technical activities. The spring mechanism of the Models 10 & 80 has been replaced with a balanced-arm mechanism that maintains the selected position even when the lamp is exposed to strong vibrations in the work environment. Other features include a reflector with a handle and a base plate with an adjustable ball joint that can be screwed on tightly. An adapter can be used to connect the base plate to a clamp base, a table base or a wall mount if the table or work surface does not accommodate drilled holes. The adapter and clamp base are available separately. The Mec 103 has a black hammer finish.

Light arm length 1.12 m (lower part 500 mm, middle part 280 mm, upper part 340 mm). Projection max. ca. 1.2 m. Lamp head Ø 165 mm. Weight 1.35 kg. Porcelain socket E27, max. 60 W.

Product code **191226**

## Black JUMO jointed Bakelite® lamp.

In 1945, the engineers of the French lamp manufacturer JUMO designed a jointed lamp that can be extended to a height of 41 cm by means of three joints, but as soon as its light is no longer needed, it shrinks like a turtle by folding all its extremities back in and concealing them under a hood. This hood, which is made of Bakelite®, also serves as a shade. The price is explained by the material quality of the 70 individual parts and the fact that they are carefully assembled by hand. We have acquired the ambitious project of the JUMO reissue from two French enthusiasts and have since been manufacturing this lamp ourselves.

#### JUMO jointed Bakelite® lamp

E14 socket. Pressure switch in the bottom part. Height continuously adjustable from 136 to 410 mm. Base plate length max. 280 mm, max. width 190 mm. Weight 1.3 kg. Integrated cable rewind in the base part, cable length 2 m.

Product code **100478**



# Translucent shades made of bone china.

Well known for its high level of whiteness as well as for its durability and translucence, bone china is considered the best and finest porcelain of all. In addition to kaolin, feldspar

and quartz sand, it contains up to 50 percent calcined bone ash, whose high proportion of calcium oxide and calcium phosphate gives this porcelain its special translucence.



## 1. Porcelight: The last lamps, only available from us.

When he designed this porcelain pendant lamp back in 1982, which became known as the Porcelight, Danish designer Erik Magnusson made a reverberating impact. The look of the lamp is soothing even when it is switched off – even more so when the light illuminates the room through the translucent bone china shade. Available with shade diameters of 11 and 14 cm.

### Porcelight pendant light P11 with black cord

Height 120 mm, cable length 2.8 m.  
Weight 380 g. Socket G9, max.  
40 W. Product code **182251**

### Porcelight pendant light P11 with white cord

Height 120 mm, cable length 2.8 m.  
Weight 380 g. Socket G9, max.  
40 W. Product code **182253**

### Porcelight pendant light P14 with black cord

Height 155 mm, cable length 3 m.  
Weight 660 g. Socket G9, max.  
40 W. Product code **182252**

### Porcelight pendant light P14 with white cord

Height 155 mm, cable length 3 m.  
Weight 660 g. Socket G9, max. 40 W.  
Product code **182254**

## 2. Aging with dignity: Bone china with unlacquered copper.

From our own workshop: We combined the translucent bone china shades, which we acquired along with the last remaining stock of Magnusson's Porcelight lamps in Sweden, with unpainted copper tubing to create floor and wall lamps. Copper is particularly well suited to the warm light of these shades. During the sophisticated manufacturing process, the copper tube is filled with sand so it will not break when it is bent, and a thread is soldered into the cable outlet for strain relief. Another complex step involves precisely aligning the frame. The wall and table lamps are shipped with a fabric cable as well as a cord switch and plug made of Bakelite® – unobtrusive in appearance, solid in design.



### Wall lamp copper and bone china

Height 280 mm, width 145 mm, depth 300 mm. Wall escutcheon Ø 115 mm, porcelain shade Ø 145 mm. Weight 1.05 kg.  
Product code **101221**

### Table lamp copper and bone china

Height 520 mm, width 250 mm, depth 250 mm, porcelain shade Ø 145 mm, fabric cable length 1.5 m. Weight 2.05 kg.  
Product code **101222**





## Triplex opal glass series. Double-overlaid.

The glass shades of these pendant tube, table and wall lamps are opalized in a highly complex process in which the hand-blown internal basic form of clear glass is first "overlaid" by a

middle layer of white glass and this in turn by a final layer of clear glass (= double-overlaid glass). The light cast from such a shade is brilliant but glare-free.



### 1. Pendant tube lights.

Suspension by means of a pendant tube fitting, including canopy and bright chrome "monk's cap". Both the 30 and 80 cm versions can be combined with any of the six glass bodies shown (out of a total of ten); for this reason, suspension

and glass will have to be ordered separately. All lights: IP23, E27 socket made of steel and ceramic (max. 100 W). Manufactured domestically in the northern Ruhr area.

**Pendant tube**  
with metal fitting, monk's cap and chrome canopy  
**30 cm**  
Product code **191002**  
**80 cm**  
Product code **191001**

**Spherical glass 300 mm**  
Ø 300 mm.  
**High gloss**  
Product code **191003**  
**Satin**  
Product code **191004**

**Spherical glass 350 mm open**  
Ø 350 mm, height 230 mm.  
**High gloss**  
Product code **191005**  
**Satin**  
Product code **191006**

**Stepped spherical glass 350 mm**  
Ø 350 mm, height 310 mm.  
**High gloss**  
Product code **191007**  
**Satin**  
Product code **191008**

**Elliptic glass 350 mm**  
Ø 350 mm, height 190 mm.  
**High gloss**  
Product code **191009**  
**Satin**  
Product code **191010**

**Cylindrical glass 350 mm**  
Ø 350 mm, height 260 mm.  
**High gloss**  
Product code **191011**  
**Satin**  
Product code **191012**

### 2. Table and wall lamps of the 1920s.

The design of this lamp probably originates from a draft version by Wolfgang Tümpel, whose metalwork from the golden days of Burg Giebichenstein and Weimar Bauhaus today sells for high prices at auctions. We had an original made of sheet steel and window glass. Its modest execution testified to the scarcity of materials in the years shortly after the First World War. We now have the base of the table lamp cast from brass and the glass covers turned from the same material, which gives it a stable weight of 1.2 kg. The cylinder of hand-blown triplex opal glass with a diameter of eight centimeters requires the use of candle light bulbs (E14). The table lamp and the wall lamps we derived from it are beautiful testimonies of a design approach that allows the traditional forms (here: the candlestick) to resonate in new technical worlds (here: electric light) in a sober and non-sentimental manner.



**Table light triplex opal glass**  
Chrome-plated brass. Glass cylinder Ø 80 mm, cast brass foot Ø 115 mm, height 280 mm, fabric cable 1.8 m. Weight 1.2 kg. E14, max. 40 W. Product code **163945**



**Single-light wall lamp triplex opal glass**  
Chrome-plated brass. Triplex opal glass cylinder Ø 80 mm, height 315 mm, projection 115 mm. Wall mount 80 x 150 mm. Weight 840 g. E14, max. 40 W. Product code **163946**



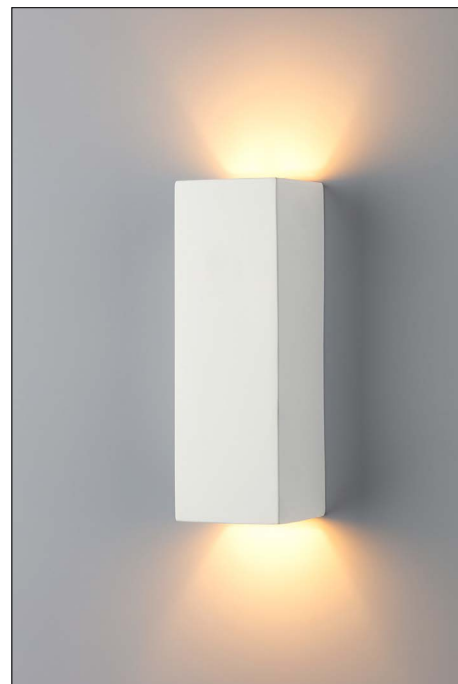
**Double-light wall lamp triplex opal glass**  
Chrome-plated brass. Triplex opal glass cylinder Ø 80 mm, height 315 mm, projection 110 mm. Wall mount 80 x 150 mm. Weight 1.96 kg. E14, max. 40 W. Product code **171640**

# Lights from Veneto.

Its wealth of chalk, marble, clay, plaster, lime, soapstone and porcelain clay has made Veneto one of the most important locations for the ceramic industry in the whole of Europe. To this day, the region is home to manufacturers of high-quality handcrafted lights, some of which date back to the Middle Ages.

## 1. Unobtrusive ceramics: Alabaster.

This is a gypsum that has been mined in the area around Volterra since Etruscan times. Neither the basic geometric shapes of these lights produced near Vicenza nor the light that flows from their gypsum-ceramic body glare-free and in a granular-impressive manner draw attention to themselves. This is why they cut an equally fine figure in living rooms, hallways and stairwells. The pleasant surface can also be painted or wallpapered over in the colour of the wall or a contrasting colour. Your professional decorator will know how this is done.



### Wall lamp rectangular small

220 x 50 x 100 mm. Weight 660 g. R7s, max. 120 W. Product code **182413**



### Wall lamp rectangular medium

350 x 50 x 100 mm. Weight 1 kg. R7s, max. 120 W. Product code **182414**



### Wall lamp rectangular large

505 x 50 x 100 mm. Weight 1.4 kg. R7s, max. 120 W. Product code **182415**



### Wall lamp rectangular with light slit

150 x 60 x 180 mm. Weight 700 g. R7s, max. 60 W. Product code **182417**



### Wall lamp square

210 x 210 x 650 mm. Weight 1.1 kg. R7s, max. 80 W. Product code **182416**



### Wall lamp rectangular vertical

70 x 205 x 700 mm. Weight 460 g. 2 x R7s, max. 2 x 33 W. Product code **182418**

### Wall lamp half shell with glass bottom

245 x 90 x 120 mm. Weight 460 g. E27, max. 57 W. Product code **182419**

### Wall lamp half shell

305 x 150 x 150 mm. Weight 460 g. E27, max. 57 W. Product code **182420**



## 2. Lights made of porcelain and enamelled steel.

Ceramiche Fabbro, an old factory in Rivignano, Italy, makes these beautiful lamps out of porcelain and enamel (porcelain-glazed steel), in addition to a variety of other ceramic art and utility items. They are all designed for indoor use.

### Porcelain wall lamp with enamel shade

Sheet steel shade, black exterior, white enamel interior. Ø 240 mm, height 115 mm, projection 300 mm. Oval porcelain wall escutcheon and enamelled arm. Weight 740 g. Metal socket E27, max. 75 W, with porcelain counter ring.

Product code **119050**



### Porcelain ceiling lamp

Natural white porcelain shade. Ø 420 mm, height 105 mm. Ceramic ceiling escutcheon Ø 115 mm, with solid brass shade holder. The shade is held by 3 knurled screws. Weight 1 kg. Metal socket E27, max. 60 W.

Product code **119048**



### Enamel/porcelain ceiling lamp

Sheet steel shade, black exterior, white enamel interior. Ø 295 mm, height 105 mm. Porcelain ceiling escutcheon Ø 115 mm. Weight 680 g. Metal socket E27, max. 75 W, with porcelain counter ring.

Product code **119049**



### Porcelain wall light

The design of this lamp is about 80 years old. Base, shade and counter ring are made of porcelain. Oval base. Shade Ø 210 mm, projection 185 mm. Weight 800 g. Metal socket E27, max. 100 W.

Product code **152267**

**Note:** Owing to the nature of the manufacturing process, larger tolerances may occur in the shape of the shades and the position of the sockets.



### Porcelain pendant lamp

Height 65 mm, Ø 11.5 cm. Weight 2 kg. Porcelain socket E27, max. 60 W. Cable length 1.5 m.

Product code **100031**



### Porcelain pendant lamp with porcelain shade

Height 65 mm, Ø 11.5 cm. Porcelain shade Ø 210 mm. Porcelain socket E27, max. 60 W. Cable length 1.5 m.

Product code **101181**



### Porcelain pendant lamp with enamel shade

Height 65 mm, Ø 11.5 cm. Enamel shade Ø 295 mm. Porcelain socket E27, max. 60 W. Cable length 1.5 m.

Product code **101182**

# Variation and composition I: Our MEDIUM light kit.

## 1. MEDIUM light kit

Our aesthetically superior and electro-technically reliable bases and lamp holders, which you have already seen on the previous pages, are the basis of the THPG light kits. Two groups of these lamp holders each have equally sized external threads that can be freely combined with matching shades (MINIMAL) or with shades and lenses (MEDIUM). If you also add your preferred cables and canopies, you will get custom lights with significantly different shapes and light patterns. Often a small variation is enough to create a different overall impression or achieve better integration into a light's designated surroundings.

Is the light intended to be shielded or unshielded? Is the shade supposed to amplify or dim the light with more reflection or less? Do you want the colour of the light to be more radiant using a white lacquered (or even enamelled) shade, or refracted into a warmer colour using a darker (or copper) shade? Even when a lamp is not switched on, it stays in the room as a sort of piece of furniture. You can experiment with black-and-white contrasts for the socket, cable, canopy and clamping ring, or even add your own personal touch with a coloured fabric cable.

The first fundamental decision is whether the socket is intended for a pendant, ceiling or wall lamp, and whether it is to be in size "MEDIUM" or "MINIMAL". The first group of MEDIUM sockets (on this page) can be combined with any of six shades and five different glasses; this alone theoretically results in 90 possible combinations, of which we can only show you a small selection. The second group of MINIMAL sockets (pp. 18/19) are available with eleven different pressed-copper and sheet steel shades. A black 1.5 meter fabric cable is supplied with each pendant light. You can also order a different cable colour or length and/or a canopy in black or white as well as with or without a side cable exit (see our accessories on p. 6).



**LISILUX ceiling mount M**  
Product code **100751**



**LISILUX wall mount M**  
Product code **100758**



**Bakelite® pendant lamp**  
With black 1.5 m fabric cable.  
Max. 60 W. Porcelain socket E27.  
Product code **101183**



**Shade copper flat**  
Ø 350 mm, height 500 mm.  
Product code **101211**



**Shade copper round bent**  
Ø 260 mm, height 600 mm.  
Product code **101205**



**Shade sheet steel flat white**  
Ø 350 mm, height 500 mm.  
Product code **101257**



**Shade sheet steel round bent white**  
Ø 260 mm, height 600 mm.  
Product code **101253**



**Shade sheet steel flat black**  
Ø 350 mm, height 500 mm.  
Product code **101256**



**Shade sheet steel round bent black**  
Ø 260 mm, height 600 mm.  
Product code **101252**

Please see page 6 for suitable canopies and cables of different colours and lengths.





**Conical threaded opal glass shade**  
Opal glass Ø 100 mm, height 150 mm.  
Product code **100844**



**Drop-shaped threaded opal glass shade**  
Opal glass: Ø 115 mm, height 150 mm.  
Product code **100843**



**Bent conical threaded opal glass shade**  
Opal glass: Ø 145 mm, height 150 mm.  
Product code **100842**



**Spherical threaded opal glass shade M**  
Opal glass: Ø 150 mm, height 153 mm.  
Product code **100774**



**Clear threaded pressed glass shade**  
Opal glass: Ø 100 mm, height 150 mm.  
Product code **100841**



## Variation and composition I: Our MINIMAL light kit.



### MINIMAL porcelain pendant lamp white

White porcelain socket with white 1.5 m fabric cable. E27, max. 60 W. Weight 200 g. With cord grip. Product code **101178**



### MINIMAL Bakelite® pendant mount

Black Bakelite® socket with shade holder and black 1.5 m fabric cable. E27, max. 60 W. With integrated cord grip. Product code **101191**



### MINIMAL Bakelite® pendant light with pull switch black

Black Bakelite® socket with black 1.5 m fabric cable. E27, max. 60 W. With cord grip and pull switch. Product code **101180**



### MINIMAL porcelain ceiling lamp holder white

Three-piece porcelain socket in gerader Form. Max. Ø 75 mm, Height 60 mm. Weight 200 g. Product code **152643**



### MINIMAL porcelain ceiling lamp holder black

Three-piece porcelain socket in gerader Form. Max. Ø 75 mm, Height 60 mm. Weight 200 g. Product code **152649**



### MINIMAL porcelain ceiling lamp holder black, with white clip-on ring

Straight three-part porcelain socket. Max. Ø 75 mm, height 60 mm. Weight 200 g. Product code **152655**



### MINIMAL porcelain wall lamp holder white

Angled three-part porcelain lamp holder. Max. Ø 75 mm, height 85 mm. Weight 200 g. Product code **152647**



### MINIMAL porcelain wall lamp holder black

Angled three-part porcelain lamp holder. Max. Ø 75 mm, height 85 mm. Weight 200 g. Product code **152651**



### MINIMAL porcelain wall lamp holder black, with white clip-on ring

Angled three-part porcelain lamp holder. Max. Ø 75 mm, height 85 mm. Weight 200 g. Product code **152656**



### Shade copper round bent

Ø 260 mm, height 600 mm.  
Product code **101202**



### Shade copper flat

Ø 350 mm, height 500 mm.  
Product code **101208**



### Shade copper conical

Ø 240 mm, height 850 mm.  
Product code **101214**



### Shade sheet steel round bent white

Ø 260 mm, height 600 mm.  
Product code **101251**



### Shade sheet steel flat white

Ø 350 mm, height 500 mm.  
Product code **101255**



### Shade sheet steel conical white

Ø 240 mm, height 850 mm.  
Product code **101259**



### Shade sheet steel round bent black

Ø 260 mm, height 600 mm.  
Product code **101250**



### Shade sheet steel flat black

Ø 350 mm, height 500 mm.  
Product code **101254**



### Shade sheet steel conical black

Ø 240 mm, height 850 mm.  
Product code **101258**



### Shade enamelled sheet steel plate-shaped small black

Ø 250 mm, height 200 mm.  
Product code **101089**



### Shade enamelled sheet steel plate-shaped large black

Ø 300 mm, height 250 mm.  
Product code **101088**

Please see page 6 for suitable canopies and cables of different colours and lengths.

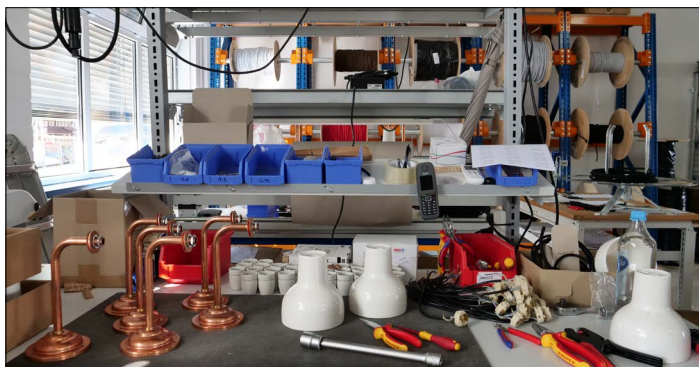


## 2. MINIMAL light kit.

Here you can combine the three MINIMAL pendants presented on page 6 and our MINIMAL porcelain wall and ceiling lamp holders from page 5 with any of eleven different pressed-copper and sheet steel shades. Black-and-white contrasts are available separately for the clip-on rings of the porcelain sockets. A black 1.5 m fabric cable is included with each light. You can also order a different cable colour or length, a canopy in black or white with or without a side cable exit (see our accessories on page 6).



## THPG light workshop.



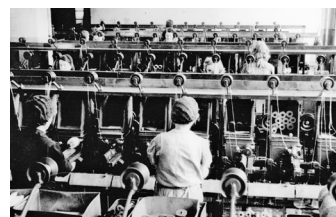
In the past decades we have continuously expanded not only our Bakelite, porcelain and glass switch series, but also our light series. Our high technical and material solidity standards for sockets, fixtures and fittings, cables and lampshades often intimidated industrial suppliers, which usually specialize in large-scale production. Eventually we were able to find the necessary craftsmanship and the willingness to produce smaller quantities at workshops for the disabled in the surrounding area. However, due to Corona, we lost these partners within just a few days two years ago. This led us to develop a more reliable solution: We took production into our own hands. Since then we have been able to offer better



quality and more flexibility. The results can be found in this catalogue. The short supply chain between the workshop and the shipping warehouse allows us to adapt our lights to your individual needs, even at short notice. The high quality of our products means that they are not only durable, but that most of them will be available for a long time to come. Spare parts will be available at short notice and long-term. Our cable supplier, for example, is a partner of many years with whom we have optimized the manufacture of fabric cables. As a result, we can now also quickly accommodate requests for changes in cable colour and length.

## VOKA. A portrait.

With a workforce of 350 at its facilities in Plauen and Falkenstein in the Vogtland region, VOKA today specializes in telecommunications cables, outdoor telephone cables, electronics and data cables, and even fiber optic cables. VOKA is probably the last remaining German company to manufacture fabric cables – for us. This cooperation was made possible by VOKA taking over the production facilities of our former supplier in Haiger. However, manufacturing fabric cables is not an entirely new venture for VOKA. The company originally started on 1 August 1919 in Plauen as Sächsische Draht- und Kabelwerke G.m.b.H. with the production of installation cables. At that time, the production range included fabric cables and rubber-



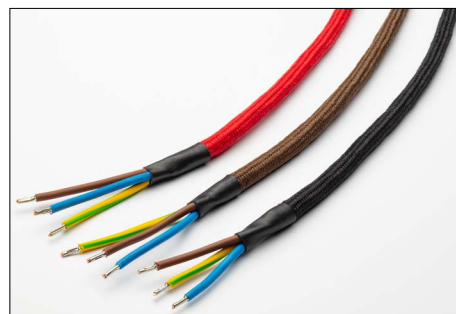
insulated cables as well as telephone cords. The Falkenstein plant produced enamelled wires for electric motors and the telecommunications industry. After the world economic crisis, the company was first taken over by Siemens, then continued as a nationally owned company from 1949 and was eventually privatized by the Treuhand in 1991. Today VOKA offers all major cable products in accordance with established standards. We consider the fact that VOKA works with us to return to its roots and – in addition to all its high-tech products – is again dedicated to the production of fabric cables as a tribute to our common cause: If what has been tried and tested is not only the most beautiful, but also the best, it is also worth being made and offered in the future.



Surface-mounted cable



Lamp cable "Fabric cable with support element"



Fabric cable 3 x 1.5 mm



## Supportive and visually appealing.

Our lights can be combined or upgraded with our light cables, porcelain canopies, matching canopy tubes (tensile reinforcements) or Bakelite® cord switches. Whereas some of these accessories were the result of the development work

for our own light series, others were discovered while we were trying to find visually appealing and solid components. They are made entirely in Germany.



### Fabric cable 3 x 0.75 three-core

Cable cross-section 3 x 0.75 mm². With an internal carrying thread as a supporting element, which safely carries up to 15 kg. For lights that require a protective earth conductor.

<b>Red</b>	Product code <b>100709</b>
<b>Brown</b>	Product code <b>100081</b>
<b>White</b>	Product code <b>100082</b>
<b>White/black</b>	Product code <b>100084</b>
<b>Black/white</b>	Product code <b>100593</b>
<b>Black</b>	Product code <b>100083</b>

### Fabric cable ready for installation

Strip cable cores and crimp a wire ferrule. Product code **900536**



### Fabric cable 2 x 0.75 two-core

Cable cross-section 2 x 0.75 mm². With an internal carrying thread as a supporting element, which safely carries up to 15 kg.

<b>Red</b>	Product code <b>101130</b>
<b>White</b>	Product code <b>101128</b>
<b>White/black</b>	Product code <b>101129</b>
<b>Black</b>	Product code <b>101127</b>

### Fabric cable ready for installation

Strip cable cores and crimp a wire ferrule. Product code **900536**



### Porcelain canopy white

White glazed porcelain hemisphere. Ø 95 mm, height 55 mm.

**Porcelain white** Product code **101090**

**Porcelain white with side cable entry** Product code **101194**



### Porcelain canopy black

Black glazed porcelain hemisphere. Ø 95 mm, height 55 mm.

**Porcelain black** Product code **101091**

**Porcelain black with side cable entry** Product code **101193**

### Canopy tubes

The tubes are made of brass, have a steel suspension at the top and clamp our lamp cables safely and in a very appealing manner. Height 105 mm, width 30 mm. Weight 40 g.



**Polished** Product code **100101**

**Chrome-plated** Product code **100102**

**Nickel-plated** Product code **100103**

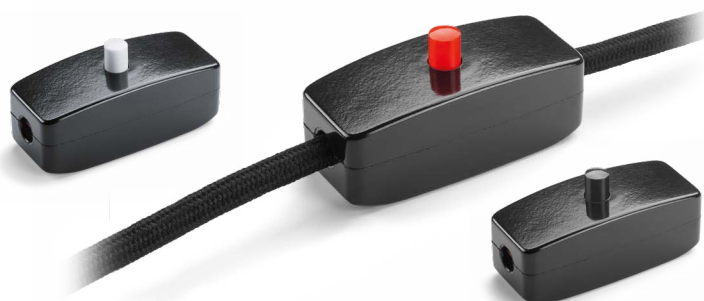
### Custom-length fabric cables.

Non-preassembled fabric cables will be shipped in one piece in the desired length (quantity in the online shopping basket = length in metres).

The following applies to both cable types: These cables are not suitable for power strips. For those you will need cables with a wire cross-section of 3 x 1.5 mm², which you can find on the next page.

### Bakelite® cable switch.

A screwed cord switch that is flawless both in function and in look and feel (it is almost a hand-pleaser). The housing is made of black Bakelite®. The built-in push button is available in three different colours - black, red and white. If fitted with a fabric cable, it adds special charm to any light fixture. 2 A, 250 V, single-pole, with a connector for neutral and ground wires. Suitable for three-core cables, with core grip clamps. Length 60 mm, height 23 mm (height including pushbutton 27 mm), width 24 mm. Weight 40 g.



**With white pushbutton**

**With black pushbutton**

**With red pushbutton**

Product code **100466**

Product code **100465**

Product code **100480**

## Real incandescent light bulbs for stockpiling.

Still successful today: a low-oxygen glass sphere in which electrical voltage makes tungsten wire filaments glow. Technically relatively simple, the incandescent bulb provides a continuous light spectrum that will never be achieved by LED lights because they lack the infrared component associated with heat generation. We still have leftover stock - a good opportunity for you to start stocking up. The Lindner frosted bulb is also quite shock resistant.



**Bulb radium clear, 10 pack**

60 W

Product code **101144**



**Bulb Lindner shock-resistant frosted, 10 pack**

25 W

Product code **101145**

40 W

Product code **101146**

60 W

Product code **101147**

100 W

Product code **101148**

## Reliable electrical engineering.

It is enough to pick them up and hold them in your hand: Their weight, material and finish indicate the superior quality of these power strips, extension cords and switches, most of which are made in Germany. You would not feel the need to hide them under furniture or behind curtains, because they are pleasing not only to the hand, but also to the eye.

All housings are made of bakelites, thermosets or, as in the case of our power block, of wood. The cables designed for this application are sheathed with fabric, are made in the Vogtland region (see p. 20) and are available in black or red. The pre-assembled cables are 1.5 m in length. Other lengths are available on request.



**Fabric cable 3 x 1.5 three-core**  
Wire cross-section of 3 x 1.5 mm<sup>2</sup> for power strips, extension cords and power block. Simply indicate the desired length under "Quantity": quantity (given as integer) = length in metres. Delivered in once piece.



**Plug**  
Product code **139447**



**Right-angle plug**  
Product code **100870**



**Connector**  
Product code **139448**

**Red** Product code **100926**  
**Black** Product code **100924**  
**Fabric cable ready for installation**  
Strip cable cores and crimp a wire ferrule. Product code **900536**

**Solid material. Pleasing to your eye and hands.**

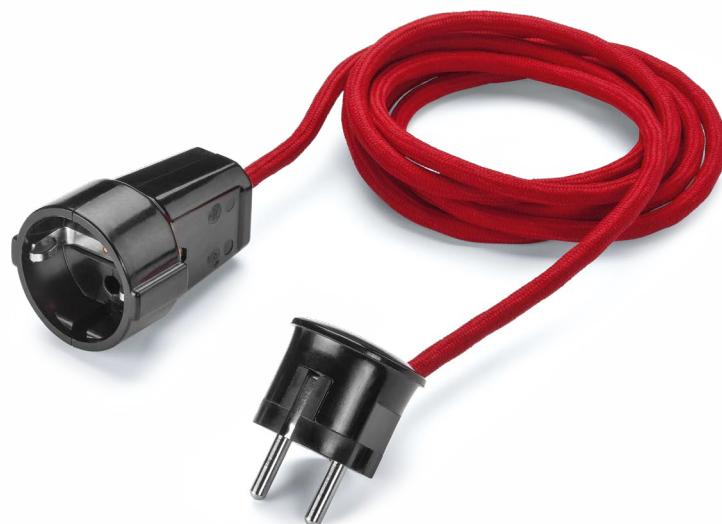
All housings are made of Bakelite®, the most suitable material for these applications. All leads are made of black or red fabric cable. Length 2.5 m. Other lengths of fabric cables (and other colours for orders in appropriately large quantities) are available on request. VDE-certified, IP20.



**5-way power strip with switch and fabric cable**  
**Schuko plug and sockets, black cable** Product code **101035**  
**Schuko plug and sockets, red cable** Product code **101036**

**3-way table power strip duroplast black**  
**Schuko plug and sockets, fabric red cable** Product code **100323**  
**Schuko plug and sockets, fabric black cable** Product code **100339**  
**Right-angle plug, fabric red cable** Product code **100457**  
**Right-angle plug, fabric black cable** Product code **100854**





**Extension cord, socket with protective earth conductor, angled plug, duroplast black**

**Red cable** Product code **100857**  
**Black cable** Product code **100855**



#### **Volt-free.**

This switchable protective contact adapter plug with a two-pole switch (switch position 0 = off, switch position I = on) allows switching from continuous current to volt-free. Devices with what is known as stand-by technology are still live even when they are idle; that is, when they are not in use. This may cause poor sleep or have other adverse effects for sensitive people. By pressing the switch on the side, the voltage state on the connected devices is cancelled - both inside the device and in the lead. This function is the same as that of a switchable power strip.

#### **Switchable intermediate plug duroplast black**

Black duroplast. 230 V, 16 A, 50 Hz.  
 Only suitable for alternating current.  
 Ø 5 cm. Length 450 mm. Weight 50 g. Product code **100477**

#### **The THPG power block.**

An oak block, sawed in one piece from the trunk, 14 x 14 x 14 cm in size and weighing 1.3 kg, optionally fitted with 3 or 4 sockets made of Bakelite® and a black or red 1.5 m length of our fabric cable. Alternatively, the block can be fitted with a carrying handle made of Bakelite®. An angled plug is also available to replace the regular plug (see p. 22).



#### **THPG power block (3 sockets)**

**Black cable** Product code **101185**  
**Red cable** Product code **101186**

#### **THPG power block (4 sockets)**

**Black cable** Product code **101187**  
**Red cable** Product code **101188**

#### **Carrying handle small, black Bakelite®**

Product code **177400**



## What **else** we do.

Indoor and outdoor switch systems made of  
porcelain, Bakelite® and white glass · Bathroom fixtures and fittings ·  
Doorbells and many other things that are made to last



Thomas Hoof Produktgesellschaft mbH & Co. KG  
Bahnhofstr. 3 · D-59348 Lüdinghausen · Phone +49 (0)2591 25 90-210 · Fax +49 (0)2591 25 90-190  
info@thpg.de · www.thpg.de